



# Eyes AND Ears

VOL. 11, NO. 10

A PUBLICATION OF CAST COMMUNICATIONS/THE DISNEY UNIVERSITY

MARCH 6, 1981



## SAVE IT, FLORIDA!

Energy conservation has become an everyday topic of discussion in the past few years. But when you consider that the State of Florida currently has a 70% dependence on petroleum for energy for our economy, it becomes even more important to stop talking about energy conservation and start doing something.

Last fall, Governor Graham announced a new program, called the Governor's Energy Partners, to make energy conservation a way of life in Florida. And the current goal is to encourage everyone to reduce consumption of energy by 25% during the 1980's.

The Governor's Energy Partners is a group of private corporations and public organizations who have joined with the Governor to mount or create an energy conservation awareness in all Floridians. Among the list of partners is, of course, **Walt Disney World Co.**, and we're doing our part to save energy. Other participants include Burger King Corp., Delta Airlines, Inc., Eastern Airlines, Eckerd's, Inc., McDonald's Corp., Miami Dolphins Ltd., Publix Super Markets, Inc., Sea World of Florida, Southeast Banks, and Wometco Enterprises, Inc., just to name a few!

But it's not just companies and corporations that have to join in the Governor's Partners to make energy conservation the number one priority in people's minds. It takes an **individual commitment** from all of us to do our part in saving energy. But what can you do? Just about everything!

### Save It At Home

You can save a lot of energy as well as money, if you concentrate on energy conservation in your home. Here are five easy ways to save energy at home:

- (1) Have a home energy audit to discover how you may save thousands of dollars on energy costs in the 1980's. Call your local power company.
- (2) Keep your cooling-heating thermostat set no lower than 78° in summer, no higher than 65° in winter.
- (3) Keep your water heater set no higher than 120° (140° if you use a dishwasher). Wrap it with an insulating blanket. And turn it off when you're away for weekends.
- (4) Keep outside air out by caulking and weather stripping doors and windows

(5) Increase the amount of insulation where you live. Use window shades, trees and awnings to encourage natural cooling.

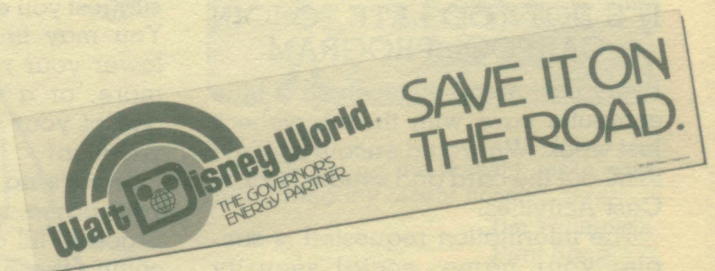
### Save It On The Road

Put the money you earn in your pocket, not in your gas tank! So here are five ideas to save energy on the road:

- (1) Car pool. Van pool. Use public transportation. To work. To school. To wherever. By sharing the ride, you can save hundreds of dollars a year.
- (2) When starting up, accelerate briskly, and steadily, until you reach the proper cruising speed. You'll improve mileage.
- (3) Drive a car that won't eat you out of house and home. Select the most energy efficient car for your needs. Nobody expects gas prices to go down.
- (4) Keep your car and tires in shape. A tuneup, proper air pressure and changing oil at the right time can save money every mile you drive.
- (5) Streamline your truck by installing a cab-mounted wind deflector.

### Save It At Work

If we waste energy at work it costs more to run Walt Disney World, and that hurts you too. So turn off lights if no one is working in an office, don't leave electric equipment running if you're not using it, and dress warmly in the winter or lightly in the summer — we've already adjusted the thermostats to eliminate unnecessary energy waste.



And most importantly, tell the world you're behind the Governor's Energy Partners campaign . . . pick up a bumper sticker saying "Save It On The Road" at any Cast Activities location!

We all need to do our part . . . it's our future too!

## CASSELBERRY TO APOPKA BUS SERVICE

### PARK 'N RIDE LOCATIONS

#### BUTLER PLAZA

Located on SR 436 (Semoran Boulevard) at Howell Branch Road. All cars should park in the southeast corner of the parking lot.

#### SEMINOLE PLAZA

Located on SR 436 (Semoran Boulevard) at U.S. 17-92 (Dixie Highway). Due to limited parking space available, **no parking is allowed**. This located is for drop-off commuters only.

#### INTERSTATE MALL

Located on SR 436 (Semoran Boulevard) at Interstate 4. All cars should park in the northeast corner of the parking lot.

#### BRANTLEY SQUARE

Located on SR 436 (Semoran Boulevard) west of Interstate 4. All cars should park on the southwest perimeter of the parking lot, **behind Eckerd's Drugstore**.

#### APOPKA SQUARE

Located on SR 436 on the east side of Apopka. All cars should park along the west perimeter of the parking lot.

#### SOUTH APOPKA

Located on SR 437A just south of Apopka, at the Bi-Lo Food Store.

### SOUTH SEMINOLE TRANSPORT, INC. BUS SCHEDULE

ORLANDO	PICK-UP	PICK-UP	PICK-UP
Stop 1 Butler Plaza	6:15 am	1:15 pm	9:15 pm
Stop 2 Seminole Plaza	6:23 am	1:23 pm	9:23 pm
Stop 3 Interstate Mall	6:32 am	1:32 pm	9:32 pm
Stop 4 Brantley Square	6:39 am	1:39 pm	9:39 pm
Stop 5 Apopka Square	6:51 am	1:51 pm	9:51 pm
Stop 6 South Apopka	6:55 am	1:55 pm	9:55 pm

WALT DISNEY WORLD	DROP-OFF	DROP-OFF	DROP-OFF
Stop 1 North Service Area	7:30 am	2:30 pm	10:30 pm
Stop 2 Golf Resort Hotel	7:35 am	2:35 pm	10:35 pm
Stop 3 Polynesian Village	7:38 am	2:38 pm	10:38 pm
Stop 4 Contemporary Resort	7:43 am	2:43 pm	10:43 pm
Stop 5 Fort Wilderness	7:53 am	2:53 pm	10:53 pm
Stop 6 Lake Buena Vista	8:08 am	3:08 pm	11:08 pm

EXIT WDW	PICK-UP	PICK-UP	PICK-UP
Stop 6 Lake Buena Vista	8:10 am	4:15 pm	11:15 pm
Stop 5 Fort Wilderness	8:25 am	4:30 pm	11:30 pm
Stop 4 Contemporary Resort	8:35 am	4:35 pm	11:35 pm
Stop 3 Polynesian Village	8:40 am	4:40 pm	11:40 pm
Stop 2 Golf Resort Hotel	8:43 am	4:43 pm	11:43 pm
Stop 1 North Service Area	8:48 am	4:48 pm	11:48 pm

ORLANDO	DROP-OFF	DROP-OFF	DROP-OFF
Stop 6 South Apopka	9:23 am	5:23 pm	12:23 am
Stop 5 Apopka Square	9:27 am	5:27 pm	12:27 am
Stop 4 Brantley Square	9:39 am	5:39 pm	12:39 am
Stop 3 Interstate Mall	9:46 am	5:46 pm	12:46 pm
Stop 2 Seminole Plaza	9:55 am	5:55 pm	12:55 am
Stop 1 Butler Plaza	10:03 am	6:03 pm	1:03 am

### PINE CASTLE AREA VAN OPENING



There will be an opening in Van Pool 7 for a **driver**, effective March 31. This van originates in the Pine Castle/Belle Isle neighborhoods, for cast members working Monday through Friday, 8 a.m. to 5 p.m.

Van pool drivers ride for **free**, in return for certain services including driving, maintenance upkeep, etc.

If you are interested in driving Van Pool 7, please call **Dent Thompson** in Cast Activities at 824-4254.

There are also several **rider openings** in this van. Call for further details today!

### IT'S NOT TOO LATE TO JOIN CARPOOL PROGRAM

Every cast member received a blue computer card with their paycheck last week. We would encourage you to fill out the card and send it back to Cast Activities.

The information requested is simple: your name, social security number, and company origin number. (Your company origin number is on the face of your time card, or ask your supervisor.) At your paycheck distribution location, you'll

also find a carpool map crisscrossed by red grid lines. Just read up and down and enter your **grid letter** and **grid number** on the computer input card also. If you live outside the map's boundaries, then enter your home ZIP code on the card.

A computer will batch the data and list cast members who live within a mile of each other. This information will be kept confidential and distributed to our **Transportation Coordinators** in each division, who will in turn work directly with cast members desiring to set up a carpool.

By adding just one person to your car, you can cut your transportation costs by half, two people into thirds, etc.

If you are already in a carpool, we suggest you enter the system as well. You may find **additional riders** to lower your ride sharing costs even more, or a **substitute rider** when one of your regular riders goes on vacation!

There's **no cost or hassle** to enter your name, so all cast members are urged to fill out the card and begin cutting those transportation costs by half or more!

Additional cards and maps are available through your division transportation coordinator and Cast Activities.

### CONTRACT SIGNED FOR AMERICAN ADVENTURE CONSTRUCTION

Darin & Armstrong, Inc., of Southfield, Mich., has been awarded the construction contract for the American Adventure pavilion in EPCOT Center at Walt Disney World. The firm is also building the Spaceship Earth pavilion.

The construction contract includes a three-story, colonial-themed building, housing the 1,000-seat attraction and preshow area, an adjacent themed food location and an outdoor amphitheater with seating for 1,500 people as well as staging areas. The American Adventure will involve more than 100,000 square feet.

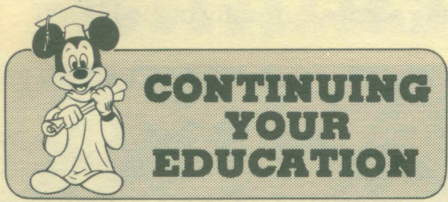
The show, the most elaborate Audio-Animatronic show ever "Imagined" by the Disney organization, is presented by American Express and Coca-Cola. It features a cast of more than 30 figures from the nation's 350-year history, from Benjamin Franklin and Thomas Jefferson to Theodore Roosevelt and Will Rogers. An elaborate stage with life-size scenes will bring added realism to the show.

The next major bids to be awarded for the EPCOT Center include a

Continued column 3

package for the Italian and German pavilions in World Showcase and the Imagination pavilion in Future World.

EPCOT Center will open October 1, 1982.



### CONTINUING YOUR EDUCATION

#### MANAGEMENT AND SUPERVISORY DEVELOPMENT CLASSES BEGIN NEXT WEEK

The Disney University, in cooperation with Orange County Adult Education, is once again offering courses in the Management and Supervisory Development Program. This program is designed as a total development concept, divided into short courses of a total of 40 hours each. A Certificate of Completion is awarded to everyone who successfully completes each course.

The classes offered this spring include:

• **Supervision I** — Essentials of Supervision covers supervisory planning, organizing, directing, coordinating and controlling, human relations, and group dynamics for those in supervision or those aspiring to supervisory or management positions. Two sections of Supervision I are offered: **Mondays from 4 to 7 p.m.** beginning Monday, March 9, or **Wednesdays from noon to 3 p.m.** beginning Wednesday, March 11. Enrollment cost is \$12.

• **Effective Communication I** — This course is designed to help the student understand the foundations of communication — how to really get a message across to others and how to "hear" what others are really saying. Two sections of Effective Communication are offered: **Tuesdays from noon to 3 p.m.** beginning March 10 or **Thursdays from 4 to 7 p.m.** beginning March 12. Enrollment cost is \$9.

• **Human Factors in Supervision** — This course is a challenging exploration into physical, mental, and emotional behavior and people-to-people understanding. It is designed to help the participant deal more effectively with supervisory situations and handling people. Two sections are offered of Human Factors in

Supervision: **Tuesdays from 4 to 7 p.m.** beginning March 10 or **Thursdays from noon to 3 p.m.** beginning March 12. Enrollment cost is \$9.

Contact the Facilities Learning Center at extension 4148 for more information and for registration.

#### EXPERIENTIAL LEARNING PROGRAM

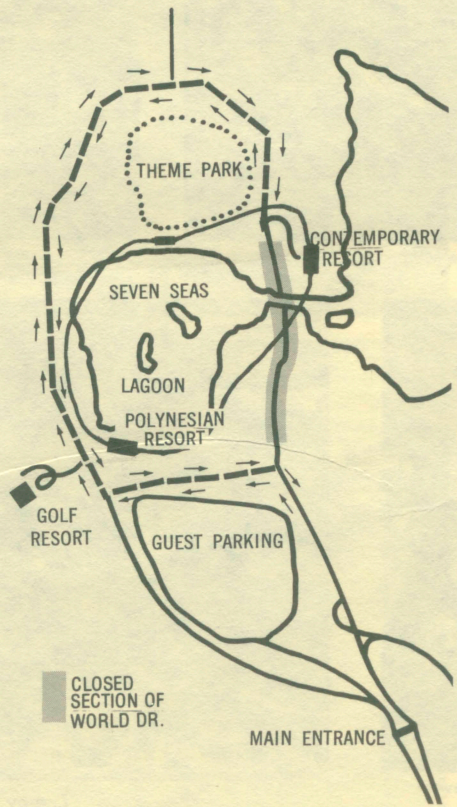
Do you realize that the experiences you have had at work, in your professional associations, hobbies, and community interests may qualify you for college-level credits? Are you interested in learning more about how you can get credits in this manner?

Drop by the Disney University at the Center Building for more information on the Experiential Learning Program offered through Valencia Community College today!

#### ONE-WAY TRAFFIC ON WORLD DRIVE

Throughout the coming week, **March 9 through 13**, World Drive from the intersection of Seven Seas Drive to the intersection of Monorail Way will be limited to one-way traffic while the road is resurfaced.

Cast members are urged to travel alternate routes if possible to avoid unnecessary delays for themselves.



#### GROUP INSURANCE UNDER REHAB

The Group Insurance Department is currently undergoing a "facelift" as they expand into a new office area in the Center Building.

During the next few days while this rehab is in progress the Group Insurance Department will conduct business as usual, although on a limited scale.

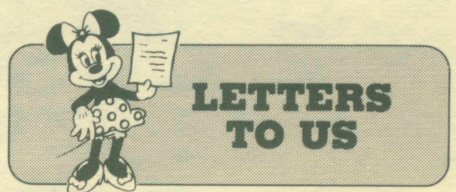
Your patience is appreciated while we reorganize to serve you better.

#### JUNIOR ACHIEVERS MAKE DISNEY DEBUT

Mark your calendars now to visit Cast Activities in the Center Building on **Thursday, March 19, from 10 a.m. to 3 p.m.** and see the Walt Disney World-counseled Junior Achievement companies' products.

These companies have done very well in competition this year. **The M.O.B.**, who received the Best Marketing Display award at the recent Fashion Square Mall Trade Fair, will be selling cutting boards, mirrors, and their latest creation, "Fuzzie." **Business Encounters**, twice named Company of the Quarter indicating their achievements in all areas, will display and sell their spice ropes. These attractive ropes hold fragrant spices to enhance your kitchen and come in assorted colors and prints. **T.B.C.** will have their attractive and useful spool holders on hand, especially designed for the seamstress.

All of these products are manufactured and marketed by the Junior Achievers, and range in price from \$1 to \$8. Stop by Cast Activities to meet the Junior Achievers, the business leaders of tomorrow, and purchase some of these fine products.



#### LETTERS TO US

To the Cast,  
*Thank you for the flowers, visits, and calls during my recent hospital stay.*

**Jim Thompson**  
Print Shop

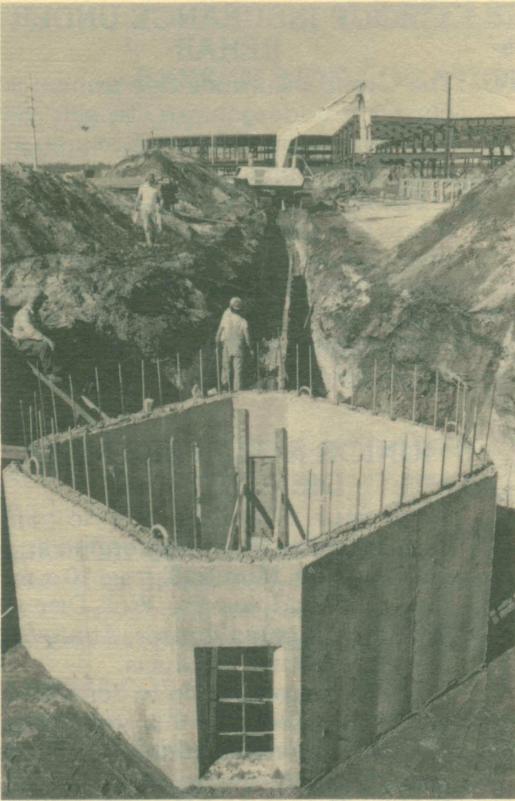
*I wish to thank you all for the beautiful flowers. It is nice to be remembered when you are ill.*

*Thanks again,*  
**Scooter Huller**

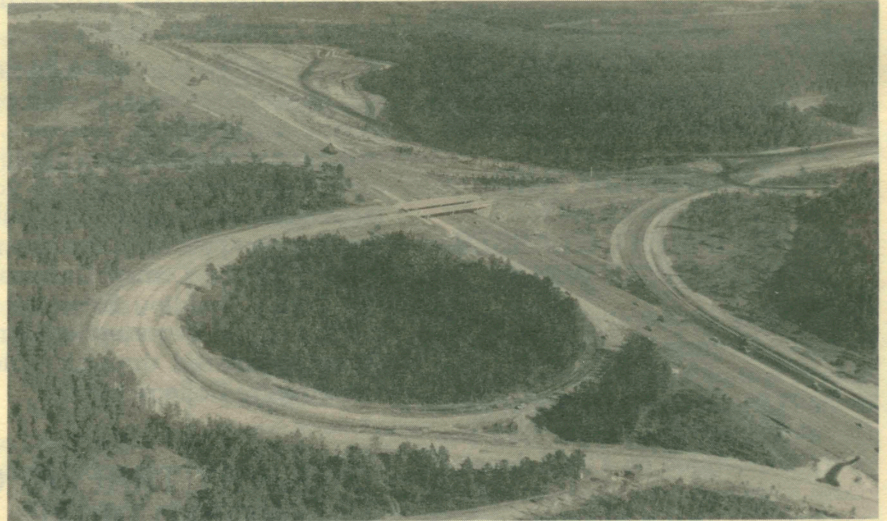
## EPCOT UPDATE

If you haven't noticed, new Project Update Boards were placed in all cast cafeterias last week to give you a close look at the progress taking place on EPCOT Center. These photos will be updated from time-to-time as the progress continues and will include scenes from Tokyo Disneyland and the Houston WEDway project as they become available.

Here's a closer look at some of the scenes currently at the EPCOT site.



*On-site underground hot/cold water utilities with the Transportation Pavilion and Energy Plant in the background*



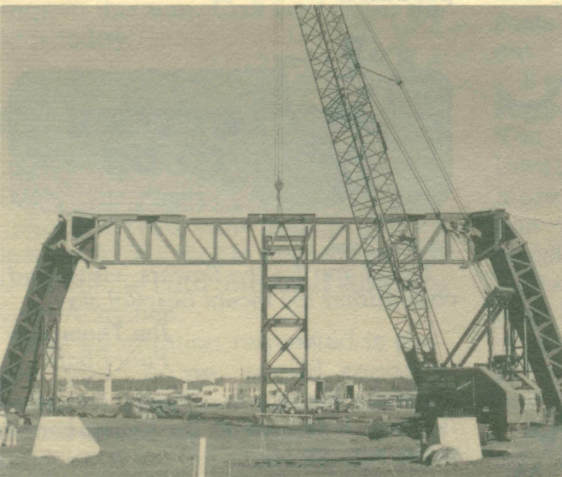
*North-south road interchange to EPCOT.*



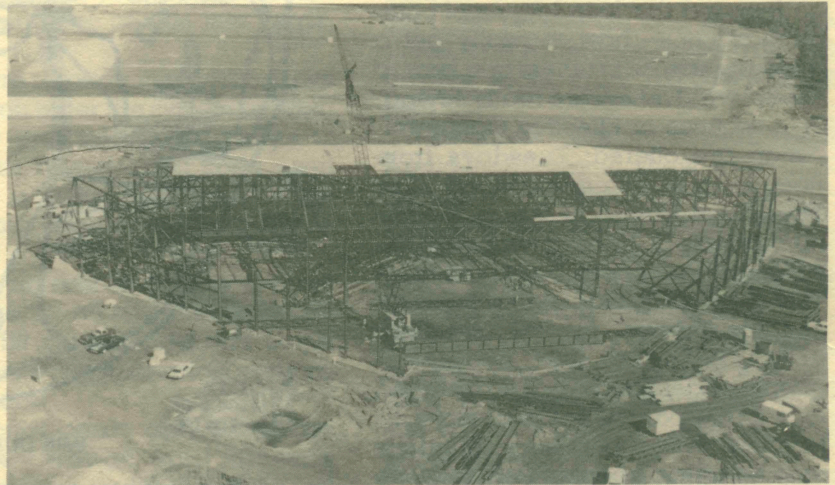
*An aerial view of the site looking north to the Magic Kingdom.*



*Land Pavilion first steel.*



*Support legs of Spaceship Earth going up with the elevator shaft in the center.*

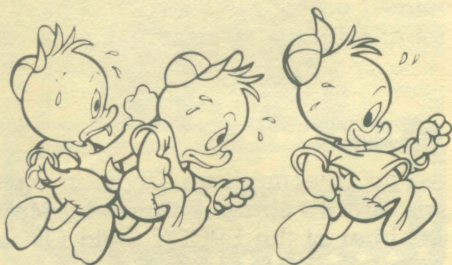


*Energy Pavilion guest parking lot.*

# CAST ACTIVITIES



## WEDNESDAY IS THE DEADLINE FOR THE SAINT PATRICK'S DAY ROAD RACE



The deadline for the Fifth Annual Saint Patrick's Day Road Race is **Wednesday, March 11**. All contestants must sign up at Cast Activities with a \$5 entry fee by 5 p.m., Wednesday to be eligible to participate in this year's event.

Those participating should be at Little Lake Bryan by **8 a.m., Saturday, March 14**, the day of the race. The race will begin promptly at 9 a.m. at the junction

of Sea World Drive and Starway Drive, just outside the Sea World main parking lot. The four-mile run will be over partially paved and dirt roads around Lake Willis and then south on Frontage Road to the Little Lake Bryan parking lot.

Trophies will be awarded after the race in the various age groups in both divisions. Every survivor will receive a "Survivor's T-shirt" and will be invited to a light breakfast after the race, giving participants from Walt Disney World, Sea World, Stars Hall of Fame, Circus World, and Wet 'n Wild a chance to get to know each other.

Don't forget to sign up by Wednesday . . . and plan on bringing the entire family with you the day of the race, and make it a Day at the Lake!




## SPORTS, CLUBS & SPECIAL EVENTS

### SPORTSMAN'S ASSOCIATION

Hurry and get your reservations in for our Bar-be-que Pig Roast at Lake Whippoorwill Resort Campground on Route 15 off the Beeline Expressway. The dates are April 24 and 25, with a two-night cost at just \$19.76. There is currently no limit on the number of reservations available, but the deadline to sign up is Monday, April 13. For the Saturday night supper, there is an additional charge of \$2 per adult and \$1 per child plus a covered dish for nonmembers.

Plan on bringing your boats and fishing poles as there is a big lake and boat ramp for your use. For those who want to sunbathe, there's a nice sandy beach. See you there!

### SOFTBALL RESULTS

Last week's scores for our Spring Softball Leagues were as follows:

#### Ladies' League

- LBV Communities 17, Tickets 1
- Trammies 6, Ops/LaFemme 2
- Wardrobe 7, Bordens 0

#### Men's Leagues

- Dry Dock 9, Reapers 8
- Cast Activities 28, Hot-Rods 5
- Zoo Crew 16, Bordens 2
- Contemporary Resort 16, La Cantina 14
- LBV Merchandise 17, Fantasyland Merchandise 9
- River Rats 9, The Club 5
- WED Sox 23, LBV Custodial 8
- Deposit Ops 15, LBV Recreation 7
- Town Square 8, Giraffe 5
- Fubars 6, Resorts 5
- Plaza Pavilion 27, Crystal Palace 9
- Theme Park Maintenance 18, Superballers 0
- Decorating 13, World Landscaping 3
- LBV Landscaping 8, Fort Wilderness 7
- Contemporary Marina 13, Snafu 11
- Salmonella 19, Contemporary Foods 4
- Empress Lilly 13, Transportation 8
- Pecos Bill 21, Fantasyland Foods 0

## SCUBA CLASSES BEGIN

If your desire is to swim with the fish in the deep blue sea, then sign up now for SCUBA lessons which start on **Monday, March 16**. In six weeks you will learn everything about this exciting sport, be certified and become a member of the Walt Disney World Dive Club. The class costs \$65, which includes the use of all diving gear including the final check-out dive. You will need to provide your own snorkel, mask, and fins.

Dry sessions are held on Mondays at the Center Building with a required weekly wet session scheduled either Tuesday, Wednesday, or Thursday evening at River Country, whichever day best suits your schedule. All classes will be held from 7 to 10 p.m.

Signups are limited, so "paddle" on over to Cast Activities at the Center Building or the Lake Buena Vista satellite to reserve your spot.

For more information, contact either **Wayne Mitchell** at extension 4768 or **Jack Tuscanny** at extension 4781.

## BASS TEAM MEETS TOMORROW

The next meeting for the Walt Disney World Sportsman's Association Bass Team will be tomorrow, **Saturday, March 7, at 7:30 p.m.** at the Pizza Boy Restaurant on South Orange Blossom Trail. The agenda includes a discussion on the next boat tournament scheduled for Saturday, March 14, on Lake Conway.

Results of the February Tournament on the Saint Johns River are as follows:

- 1st Place — Gary Dilts and Bernie Schildhouse
- 2nd Place — Don McDeed and Kevin McDeed
- 3rd Place — Tom Catlett and Howard Gamble
- Big Bass — Gary Dilts

## DIVE CLUB MEETINGS CHANGE

The next Dive Club meeting will be held on **Tuesday, March 10, at 7:30 p.m. at Sambo's Restaurant** next to the Windhover Condominiums on Kirkman Road. **All future meetings will be held on the second and fourth Thursday** of each month at the Windhover Condominiums clubhouse.

Continued column 2

The Dive Club will be diving **Fort Lauderdale on March 21 and 22**. A package has been put together to include two days diving and air fills, lodging for one night, and meals. The total cost is only \$45, payable when signing up at Cast Activities. The trip can only accommodate 16 divers, so sign up today!

## DANCE AEROBICS BEGINS MONDAY

This is your last chance to get in shape for summer! Because **Dance Aerobics begins on Monday, March 9**.

This 12-week session will continue **through Wednesday, May 27**, with classes meeting every Monday and Wednesday evening from **5:45 to 6:45 p.m.** at the Stage Door Cafe in the Center Building. That's 24 sessions at a cost of \$50 — and it's such a great way to have fun and stay healthy!

Signups are currently being accepted at Cast Activities in the Center Building and at the Lake Buena Vista Cast Activities satellite. Enrollment is limited so sign up today!

## ADVANCED LIFESAVING OFFERED

The Resort Training Office is offering an Advanced Lifesaving Class from **March 16 through April 3**. The class will meet at the Contemporary Resort Hotel pool, Monday through Friday mornings from 7 a.m. until 9 a.m.

Advanced Lifesaving is a prerequisite for transferring to a lifeguard position at Walt Disney World. The class is open to any interested cast member.

Contact Barbara at the Resort Training Office, 824-1000, extension 3750 to enroll in this class.

## VOLLEYBALL SEASON STARTING SOON

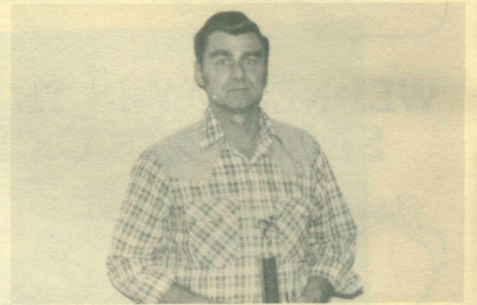
Just a reminder for all volleyball players, the Organizational Meeting for Men's, Women's, and Mixed Spring Volleyball Leagues will be **Wednesday, March 18, at 7 p.m.** at Little Lake Bryan. All team captains are asked to attend to sign up for a time as well as to help make season decisions. The "show-up" week begins Monday, March 30.

Also, anyone interested in officiating the spring league should contact Debbie Yarborough at Cast Activities at extension 4254 by March 12.

## POOL TOURNAMENT RESULTS

The Spring Pool Tournament was held Wednesday, February 26, at the WED Florida break trailer.

The Novice Division Champion is **Chuck Watt** of Key Control who defeated **Lowell Floyd** of Merchandise.



Chuck Watt.

The Intermediate Division was won in two straight games by **Mort Leubber** of the EPCOT Field Office over **John Kiely** of DACS.



Mort Leubber and John Kiely.

The Advanced Division final was between **Harvey Gehrls** of Warehouse G and **Alan Korb** of Fort Wilderness. Harvey won all three coin flips and broke the rack to open each game, but could not sink a ball; he did manage to win the first game with Alan winning the second game. The third and final game went down to the wire, with two balls on the table, Harvey attempted a tough eight-ball shot which did not fall allowing Alan to sink his last remaining ball as well as the eight-ball to win the game and match.

Congratulations to the winners and to all who completed.



Harvey Gehrls and Alan Korb.

## AFTER HOURS PLAYERS PHOTOS HERE

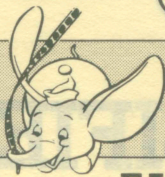
Photographs of the After Hours Players production of "Bye Bye Birdie" has arrived. Those cast members who ordered prints may pick them up at Cast Activities at the Center Building, Monday through Friday from 8 a.m. until 5 p.m.

## CAST CHOIR

Participants in the 1980 Cast Choir who ordered pictures may pick them up at Cast Activities at the Center Building. Certificates are also in for the participants.



- **Tom Jones** — Tuesday, March 10 — Lakeland Civic Center, 8 p.m., all seats reserved at \$10 and \$12.50.
- **The Lettermen** — Thursday, March 12 — Lakeland Civic Center, 8 p.m., all seats reserved at \$6.50, \$7.50, and \$8.50.
- **Amy Grant** — Saturday, March 14 — Lakeland Civic Center, 8 p.m., all seats general admission, \$6.
- **Bill Gaither Trio** — Saturday, March 21 — Lakeland Civic Center, 7:30 p.m., all seats general admission \$6 and \$7.
- **Glenn Miller Tribute** — Sunday, March 22 — Lakeland Civic Center, 7:30 p.m., all seats reserved at \$6, \$7, and \$8.
- **Mornings at Seven** — Thursday, March 24 through Sunday, March 29 — Bob Carr Auditorium. Tuesday and Wednesday, March 24 and 25 at 8 p.m. with seats reserved at \$15.95, \$16.95, and \$17.95; Thursday, March 26 at 2 p.m. with seats reserved at \$11.95, \$12.95, and \$13.95 and at 8 p.m. with seats reserved at \$13.95, \$14.95, and \$15.95; Friday, March 27 at 9 p.m. with seats reserved at \$14.50, \$15.50, and \$16.50; Saturday, March 28 at 4 p.m. with seats reserved at \$15.95, \$16.95, and \$17.95, and at 9 p.m. with seats reserved at \$14.50, \$15.50, and \$16.50; and Sunday, March 29 at 2 p.m. with seats reserved at \$13.50, \$14.50, and \$15.50.
- **Liza Minelli** — Friday and Saturday, April 3 and 4 — Bob Carr Auditorium, 7 p.m. and 10 p.m., all seats reserved \$7, \$8, and \$9.



## FAMILY FILM FESTIVAL

### FANTASYLAND THEATRE OPEN FOR FAMILY FILM FESTIVALS

Cast Activities will now be using the Fantasyland Theatre, formerly known as the Mickey Mouse Revue, for our Family Film Festival presentations, beginning with this month's premiere showing of "The Devil and Max Devlin."

To assure that you have no problem finding the theatre or being admitted, please follow these instructions.

(1) Park in the North Service Area parking lot, across the street from the Center Building. **No one** will be allowed to park in the tunnel area.

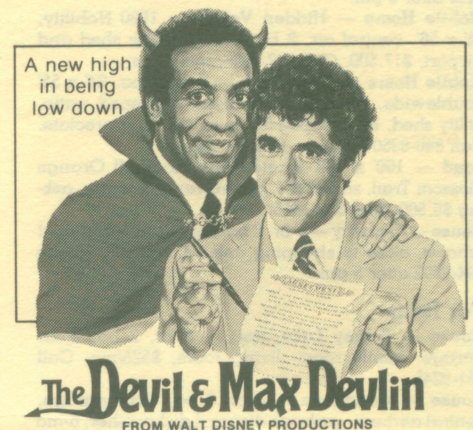
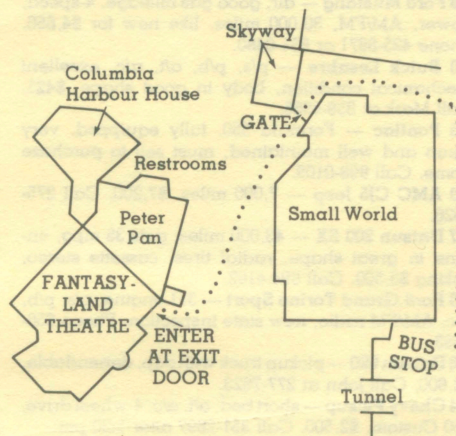
(2) Show your Family Film Festival ticket to board the employee shuttle bus at the North Service Area for transportation to the tunnel area.

(3) Once at the tunnel entrance, please do not enter the tunnel area but follow the signs to the gate between the Fantasyland Skyway and It's A Small World. This is the **only** gate which will be open to Family Film Festival ticket holders.

(4) A host or hostess at the gate will check your ticket and direct you to the exit door of the Fantasyland Theatre, located between the Castle Camera Shop and Troubadour Tavern. Once there another host or hostess will tear your ticket in half and admit you to the theatre. Keep your ticket stub.

(5) At the conclusion of the Family Film Festival presentation, exit the theme park through the same gate and re-board the employee shuttle bus for transportation to the North Service Area parking lot. You will be required to show your ticket stub before boarding the bus.

We would like to remind all cast members that family and friends are not allowed in tunnel or backstage areas, and as always there is no eating, drinking or smoking inside our theatres. We appreciate your cooperation in keeping with this Disney Tradition.



### THE DEVIL AND MAX DEVLIN OPENS NEXT WEEK

What does it take to avoid eternity in the fiery pit? Max Devlin (Elliott Gould) is the minor league sinner who strikes a bargain with Barry Satin (Bill Cosby), the devil's assistant, and has to find three unsuspecting souls to replace his own condemned soul. Whether or not he can succeed, will only be answered if you attend Cast Activities presentations of Walt Disney Productions latest release, **The Devil and Max Devlin**.

All of the previously announced showings are sold out. However, Cast Activities has made arrangements for additional showtimes. Tickets will be available March 9 at Cast Activities in the Center Building and Lake Buena Vista only for the following times:

- Saturday, March 21, at the Fantasyland Theatre at 7:30 p.m.
- Sunday, March 22, at the Fantasyland Theatre at 7:30 p.m.
- Monday, March 23, at the Fantasyland Theatre at 7:30 p.m.
- Tuesday, March 24, at the Fantasyland Theatre at 7:30 p.m.

Tickets are free to all cast members and their dependents as listed on personnel records, but please only pick up tickets at Cast Activities if you are going to use them.



# CLASSIFIED ADS

## HOW TO SUBMIT AN AD

Write your ad down, keeping it short and to the point. You **MUST** include your name, department number, work extension and home phone number for inquiries. Then, send your ad through Inter-Office Mail to Cast Communications, or drop it by our office on the 2nd floor of the Center. All **HOUSING** ads must be submitted to Cast Activities, 2nd floor of the Center. Deadline for submitting ads is 8 a.m. Friday, seven days prior to publication. A random selection of ads will appear each week in **EYES & EARS** depending on space availability.

### HOUSING

#### For Sale

- Land** — 5 acres, 15 minutes from Center Bldg. For more information, call 425-9679.
- House** — Village Green — 3 br, 2 ba, family room, formal living and dining rooms, custom drapes, 26' x 36' full basement/rec room, fenced-in yard, 2,904 sq ft living area, 13 miles from Disney, \$89,000. Call 299-4485.
- House** — Kissimmee — 3 br, 2 ba, central air/heat, dishwasher, garbage disposal, 2-car garage, \$47,500, owner will take second mortgage. Call 855-8466 after 6 pm.
- Mobile Home** — Hidden Valley — 1980 Nobility, 14' x 56', central air, 2 br, 1½ ba, utility shed and carport, \$17,500. Call 847-4526, evenings.
- Mobile Home** — Kissimmee — 3 br, 2 ba, 24' x 55' doublewide, hurricane awnings, screened patio, utility shed, landscaped lot, must see to appreciate. Call 846-8350 for more information.
- Land** — 100' x 100' located one block off Orange Blossom Trail, zoned R-1, has sewer and water, asking \$9,500. Call 352-1415.
- House** — Conway — 3 br, 2 ba, fenced-in yard, good schools, close to shopping and I-4, \$46,500. Phone 894-0892 after 5 pm.

#### For Rent

- House** — Turkey Lake area — 3 br, 2 ba, 2-car garage, family room, living room, \$525/mo. Call 351-9245.
- House** — Kissimmee — 3 br, 2 ba, 2-car garage, central air/heat, garbage disposal dishwasher, 6-mo lease, first and last month's rent, \$430 security deposit, \$430/mo. Phone 855-8466.
- Mobile Home** — near Circus World — includes washer and dryer, \$225/mo plus \$100 security deposit. Phone (813) 424-1016.
- Apartment** — Kissimmee — 1 br, pool. \$35/wk. For more information, call 847-7876.
- House** — New Smyrna Beach — 2 br, 500' from ocean, completely furnished with linens, kitchenware, TV, \$30/night with 2-day minimum, \$75 for 3-day weekend or \$150/wk. Call 298-2053 between noon and midnight on Tues thru Sat.
- Mobile Home** — Franklin, N.C. — located on 4 acres, completely furnished, \$100/wk, ideal for vacation. Phone 855-4437.
- House** — Kissimmee — 2 br, 2 ba with central air/heat, will accept up to 4 people, \$400/mo. Phone 847-7041.
- WANTED** — 1 or 2 br, furnished house, condo or apt to rent for 1 week at the end of June, preferably in the Orlando area. Phone 351-1998.

### ROOMMATES

**Male** — single parent with one daughter has apartment, needs roommate, \$150/mo plus utilities. Call 295-1498.

- Male** — mature individual wants to share new 3 br townhouse condo, excellent location, pool, clubhouse, tennis courts, use of washer/dryer, \$175/mo plus half utilities. Call 671-2356 or 678-8240.
- Male** — has furnished apartment with unfurnished bedroom, \$135/mo plus utilities. Phone 851-1736.
- Male** — has 3 br, 2 ba house, located 12 miles from Disney, \$150/mo. For more information, call 351-4280.
- Female** — Conway area — 2 br, 2 ba apt, bedroom furnished, \$167.50/mo plus half utilities. Call 896-0908.
- Female** — needs roommate for house in south Orlando area, \$125/mo plus utilities. Phone 851-0900.
- Female** — has apartment, \$120-\$140/mo, pools, tennis courts, sauna, overlooking lake. Call 855-6349.
- Female** — needs house or apartment to share with other female. Call 277-6913.

### TRANSPORTATION

- '75 Yamaha DT 250** — Enduro, new paint, 3,000 miles, must sell, \$700. Call (308) 348-4871.
- '75 Chevy Van** — equipped for camping, V-8, a/t, 51,000 miles. Phone 298-1742.
- '71 Toyota Land Cruiser** — 4 x 4, lots of new equipment, 79,000 miles, \$2,800. Call 351-5796 after 7 pm.
- '79 Vespa** — 200cc, windshield, backrest, luggage rack, 60 mpg, \$1,000 firm. Phone 299-7226 from 6-9 pm.
- '79 Camaro** — all power, a/c, AM/FM 8-track stereo, mag wheels, tilt steering, cruise control, delayed wipers, tinted windows, excellent condition, new inspections, asking \$6,600. Phone 273-0161 or 273-8243.
- '76 Ford Wagon** — 52,000 miles, very good condition, asking \$1,700. For more information, call 282-3952, anytime.
- '79 Ford Mustang** — air, good gas mileage, 4-speed, power, AM/FM, 30,000 miles, like new for \$4,650. Phone 425-8871 or 851-0480.
- '70 Buick Lesabre** — p/s, p/b, a/t, a/c, excellent mechanical condition, body in good shape, \$425. Call Mark at 859-4965.
- '75 Pontiac** — Formula 350, fully equipped, very clean and well maintained, must sell to purchase home. Call 898-0109.
- '80 AMC CJ5 Jeep** — 7,000 miles, \$7,200. Call 275-6626.
- '77 Datsun 200 SX** — 43,000 miles, gets 35 mpg, engine in great shape, radial tires, cassette stereo, asking \$3,500. Call 894-4182.
- '73 Ford Grand Torino Sport** — 351 engine, p/s, p/b, a/c, AM/FM radio, new state inspection. Phone 656-6653.
- '76 Datsun 620** — pickup truck with cap, dependable, \$2,600. Call John at 277-7623.
- '74 Chevy Pickup** — short bed, a/t, a/c, 4-wheel drive, 350 Custom, \$2,500. Call 351-2697 after 5:30 pm.
- Truck Camper** — self-contained truck camper, a/c, bath, loaded with extras, 10½' plus 4' overhead mounted on 1966 Ford 250 ¾-ton camper with special 4-speed transmission and wide 8-ply tires, ready to travel. Call 295-6891, evenings.

### MISCELLANEOUS

**Bicycle** — 12-speed, 5 wks old, still under warranty, \$120 or best offer. Call Sue at 876-3962 after 6 pm.

**Boat** — fiberglass boat with 85 hp Evinrude motor, drive-on trailer, \$3,200. Call after 6 pm on Tues, Wed and Thurs; anytime other days.

**WANTED** — early model BMW 2002 in almost any condition; DBX noise reduction unit. Call John at 277-7623.

**Sofa** — 2-pc sectional, in red, green and beige herculon, very good condition. Call 851-9541.

**Bicycle** — Sears model, adult 3-wheel, 3-speed, in excellent condition, \$100 or best offer. Call 295-4209, anytime.

**Bedspreads** — 2 matching quilted twin spreads with tiny floral print in pastel colors, machine washable in excellent condition, purchased new for \$30 ea, will sell separately for \$15 ea or together for \$25. Call Peggy at 859-3477.

**Saddle** — western show saddle by Bona Allen, 15" padded rough out seat, German silver lacing, full floral embossed, new, never used, \$500. Call 886-1491 between 2 and 9 pm.

**LOST** — cream short coat with circle pin, lost in the Center Building on Feb. 23, reward, no questions asked. Call Chris, 841-9360, evenings.

**Dinette Set** — table and 4 chairs, \$75. Phone 644-8182.

**Travel Trailer** — 13' Scotty, sleeps 4, \$600. Call 886-2190 after 6 pm.

**WANTED** — colonial antique Windsor chair(s), price negotiable. Phone 851-1736.

**For Sale** — 3 discount tickets to Busch Gardens regular admission, \$10.50 ea, these are \$7.50 ea. Call 851-1736.

**Diving Equipment** — assorted diving equipment for sale. For information, call 671-4367.

**Furniture** — dinette set with 4 chairs; couch, end table and coffee table; two twin and one double box springs and mattress sets; dresser with mirror and matching chest of drawers; all in good condition. Call 847-5390 (Kissimmee) after 5 pm.

**Carpet** — new remnant, ideal for campers, trailers, and vans, reasonably priced. Call 847-7892 (Kissimmee), evenings.

**Motor Home** — 25' 1973 Winnebago, sleeps 7, 42,000 miles, has powerplant, automatic and cruise control. Call 656-2346.

**Bed** — mattress, springs, and headboard in double size, \$35. Phone 896-3277 after 5 pm.

**Saddle** — western saddle made by Henselmeier Saddlery, 15" seat, all leather including stirrups, like new, \$125. Call 846-2463 (Kissimmee).

**Cassette Deck** — TCD-300 Tandberg with Dolby built-in, \$375. Call 846-2463 (Kissimmee).

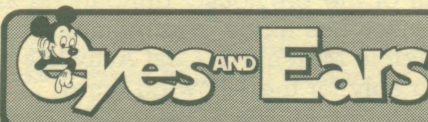
**Equalizer** — Altec Lansing 729-A stereo, 24 bands each channel, stereo equalizer, \$800. Call 846-2463 (Kissimmee).

**For Sale** — 2 sets new twin beds with frame, box spring and mattress, \$100 ea; chair and sofa in brown and tan tweed, \$275. Call 846-2463 (Kissimmee).

**Drum Set** — Premier set with snare, bass, double mounted tom-toms, floor tom-tom, 8 Zildjian cymbals, hi-hat, hardware, cases, and trap case, \$1,000. Call 846-2463 (Kissimmee).

**Bicycle** — 5-speed Italian racer, "Coppi" with bicycle car rack, \$125. Call 846-2463 (Kissimmee).

**Sofa** — Early American sofa in brown tone with wood trim, \$100. Call Don at 299-7774.



A newspaper for employees of Walt Disney World Co. and related companies. All rights reserved. Reprint of material only upon written approval of the Disney University at Walt Disney World Co. Address correspondence to:

The Editor: **EYES & EARS**, Walt Disney World Co. • P.O. Box 40, Lake Buena Vista, FL 32830

Contributors: Editor: Terri Coole • Graphics: Sue Stojanovich  
Typescript: Bonnie O'Dell • Walt Disney World Print Shop  
Walt Disney World Mail Room

©1981 Walt Disney Productions

"PREPARED BY AND FOR THE WALT DISNEY WORLD CAST"



**This document has been brought to you by**

**[The Progress City Disneyana Collection](#)**



**A Project of [Progress City, U.S.A.](#)**

**Historians and Authors please cite “The Progress City Disneyana Collection” when referencing this item. Thank you!**

**To support the Progress City Public Library's efforts, please visit our [Patreon](#)**

**Or donate via [PayPal](#)**